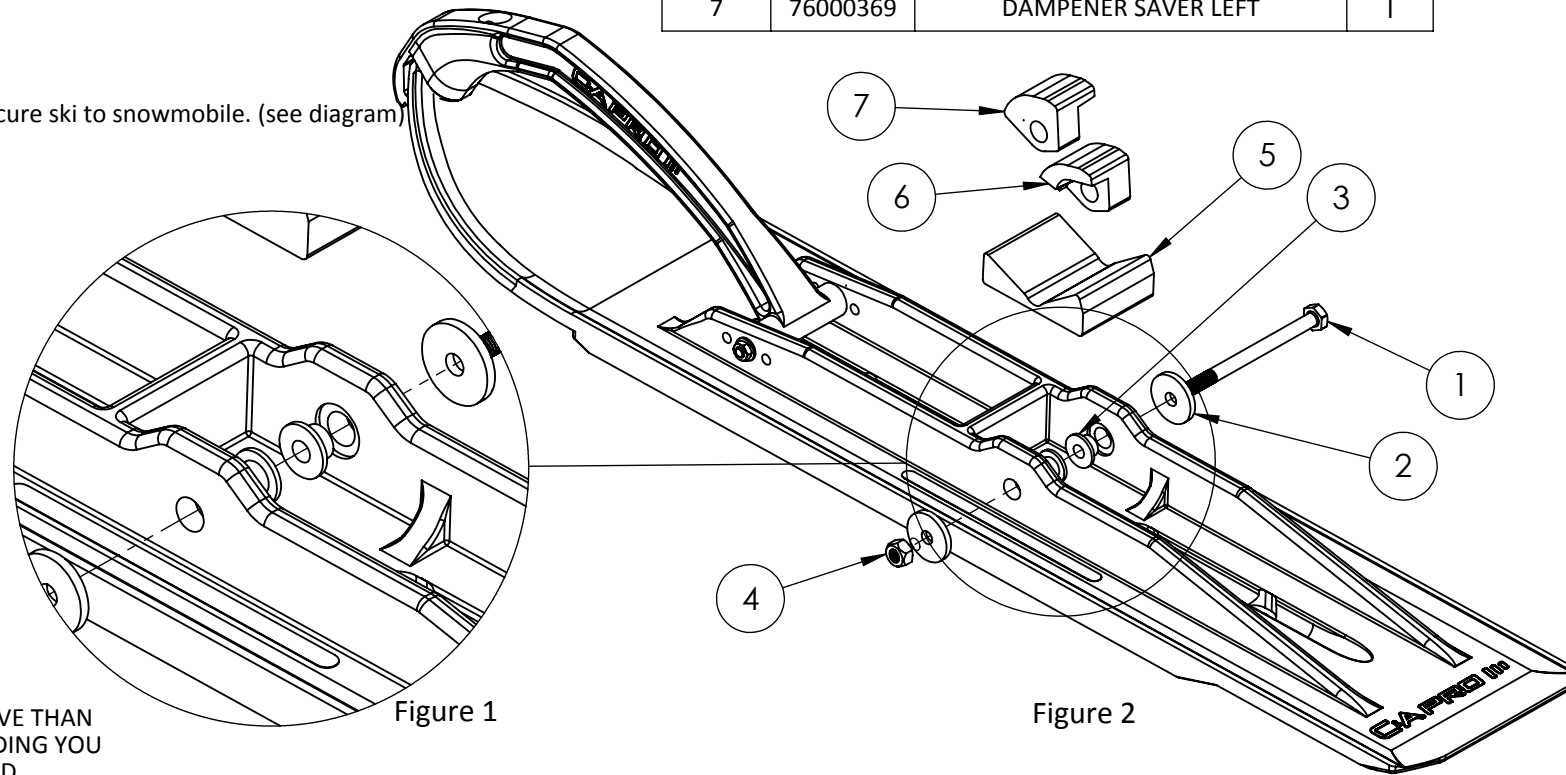


SKI INSTALLATION INSTRUCTIONS

SKI-DOO 2015 & NEWER SUMMIT T3
MOUNTING KIT #76000360

1. Remove old ski by loosening and removing the spindle nut and bolt.
2. Discard unneeded hardware (OEM bolt, and nut).
3. Install the Provided C&A Dampener Saver, set offset to preference (one per axle).
4. Install carbide on ski using the manufacturers guidelines & hardware.
5. Place the two spools (top hat shaped) into the inner saddle of the ski and push outward until flush in the saddles, they will fit very tightly. (see Figure 1)
6. Insert the rubber dampener in the ski, tall side of dampener to the rear. (see Figure 2 for dampener orientation)
7. Recommend greasing spindle bolt.
8. Using remaining provided hardware, secure ski to snowmobile. (see diagram)
9. Repeat steps 1-8 for other ski.

ITEM#	PART#	DESCRIPTION	QTY
1	76000190	METRIC BOLT, 10-1.5 X 130MM HEX	2
2	76000219	WASHER, 1.5" X .406" X .187"	4
3	76000246	BUSHING 10MM	4
4	76000193	METRIC NUT, M10-1.5 NYLOC	2
5	77000271	DAMPENER - 271	2
6	76000368	DAMPENER SAVER RIGHT	1
7	76000369	DAMPENER SAVER LEFT	1



NOTE:
BY DESIGN, THE SKIS ARE MORE AGGRESSIVE THAN FACTORY STANDARD SKIS. IF FOR TRAIL RIDING YOU FIND THAT THE SKIS ARE TURNING TO HARD, YOU MAY WANT TO LIGHTEN SKI PRESSURE FOR EASIER TURNING. FOR ASSISTANCE ON LIGHTENING SKI PRESSURE, CONSULT YOUR SNOWMOBILE OWNERS MANUAL OR YOUR SNOWMOBILE DEALER.